

synchrony



Coatings

Complete Your
Lenses

Protection in
all conditions.

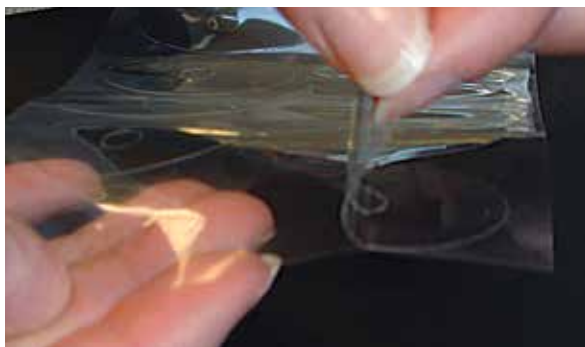
Blocking & Edging
Instructions.

Blocking & Edging Instructions. synchrony AR coatings.

IMPORTANT: Please read these instructions prior to edging synchrony AR coating.

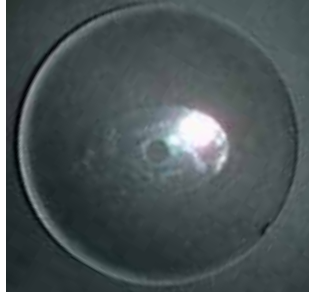
The AR coating features a super-hydrophobic coating that will deliver easy cleaning to the wearer for the life of the prescription. Because the surface of the lenses is extremely smooth, you must use the special adhesive film or Riki 1 base pads with your regular blocking material, and follow the instructions below. This will ensure that the edging process, as well as any post-edging processing such as automated drilling, is precise and secure.

- 1** Measure the lenses using standard procedures with the focimeter.
- 2** Clean the lenses with alcohol or other residue-free solvent. Do not use acetone on polycarbonate lenses.
- 3** Mark the lenses. In the case of progressive lenses, you may need to identify the engravings with a permanent marker, such as the Staedtler Lumocolor Permanent Special Marker.

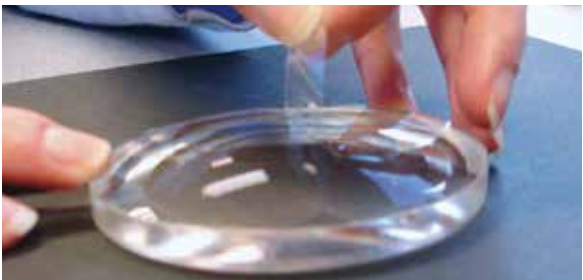


- 4** Before blocking, pull the special adhesive film off the foil.

-
- 5 Attach the film to the front surface of the lens (in the blocking area), leaving the center mark exposed.



- 6 Block the lenses with a leap pad in the normal fashion on top of the special adhesive film.
- 7 Edge the lenses using standard processing procedures within 30 minutes of blocking.
- 8 After edging, de-block the lenses in the normal fashion, remove the film from the front surface, do not use any sharp objects to remove the film, as this may damage the surface.



- 9 Blocking and edging is now complete.

Please Note:

Because of the super-hydrophobic properties of the synchrony coating, slippage may occur during the edging process if these recommendations are not followed.

synchrony

synchrony lenses offer
more designs,
more practice solutions,
more satisfied patients.

For more information contact your
Carl Zeiss Vision representative
or visit www.synchronylenses.ca

**German Precision Optics
Manufactured in Canada.**

Carl Zeiss Vision Inc.
1-800-268-6489